

Lassell House 1909 Built ca 1893. Photos 1909 and 2012. Located SW Corner LaSalle & 2nd Street





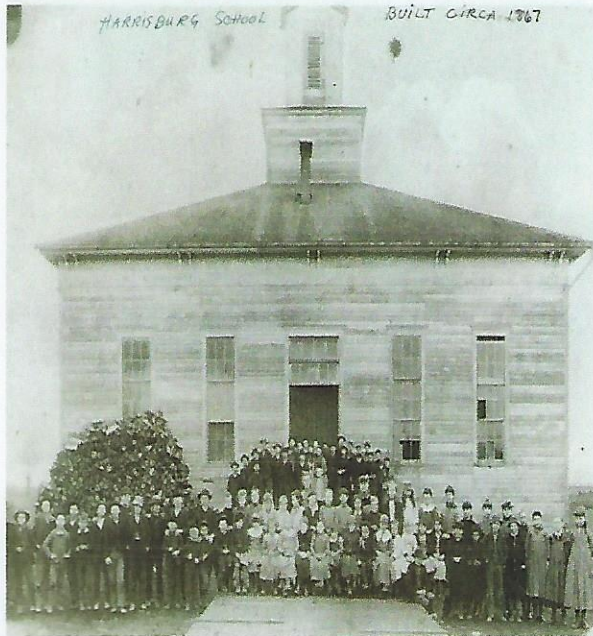
Phone "Central" (Then and Now!) First 'Central' was in the Hubbell Building. Then in this old Bank Building (RAMPY BANK) It currently houses an antique store. Background is another Bank Building, now a Chinese Restaurant. Several "Farmer Phone Lines" were enabled to connect with each other and the greater phone circuit through this 'Central' Office.





Richfield Gas+Cramers Market+Highway Café ca 1930-American Market 2012
Located SE Corner of Smith & 3rd Street

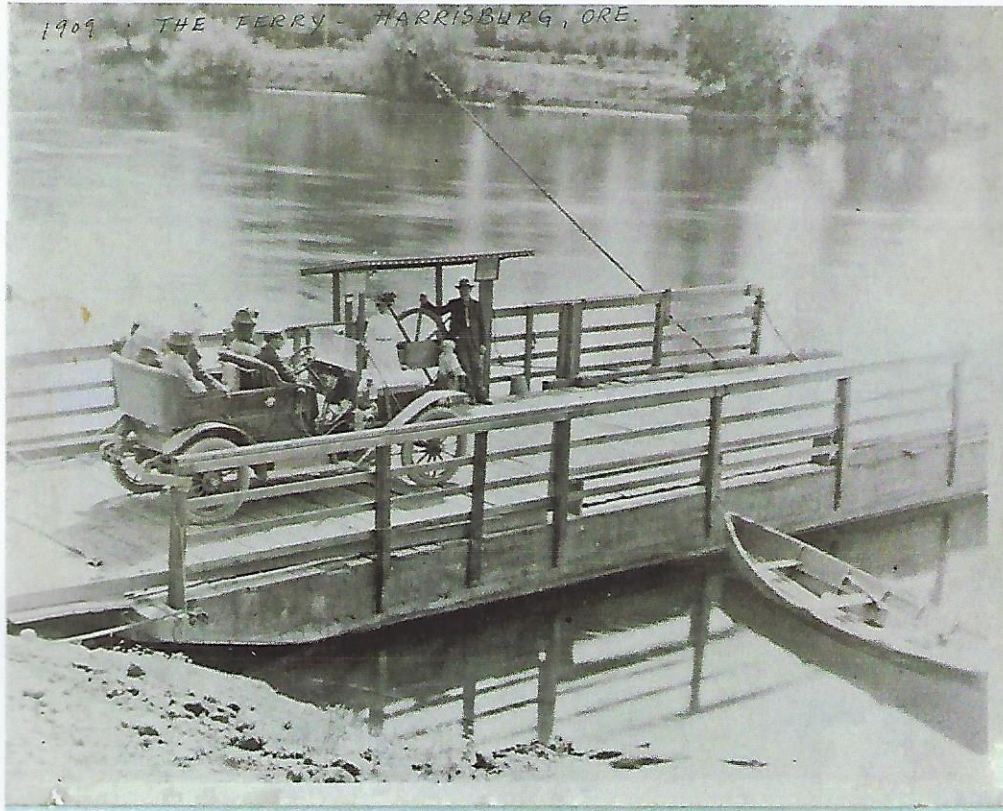




Harrisburg School ca. 1867, 1910, 2012

Location of 1867 Building is not known. Other two are on South Side Smith between 7th and 8th Streets.





1909 Ferry Near West end of Kesling Street. Below: Highway 99 Bridge that replaced the ferry. It was opened for traffic December 10, 1925. Construction contract was for \$183,200.00!

